

# Nano Collagen's Penetrating Properties!

Reaches deep into the skin

## \* The Important Role of Collagen

Collagen makes up approximately 70% of the skins' inner layers. While this percentage peaks in the twenties, it gradually decreases as the body ages. By 40 years old, the collagen level is reduced to 50% and further reduced to 25% by age 60. Reduced collagen levels cause the metabolism of each skin cell to slow, resulting in aged, hard, rougher skin. In other words, collagen is the key component in preserving the skin's youthfulness, and increasing the intake of collagen allows the skin to restore itself.

## \* Revives skin from deep within the dermal layer

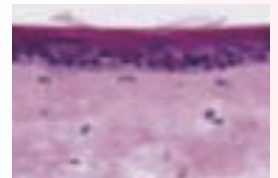
Regular collagen particles are too large to penetrate into the skin, which means that only the outermost layer receives nourishment. Finding a way to penetrate this barrier would allow the skin to radically improve. Nano sizing particles is incredibly difficult, and previous research with nano proteins showed a susceptibility to heat, causing them to quickly deteriorate. However, through extensive research, our company successfully developed a new technology to nano-size collagen without losing durability.

This new collagen, now able to penetrate into the dermis layer of skin, behaves the same way as the body's natural collagen, giving you beautiful, smooth skin.



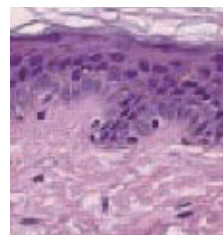
Skin at 20 years of age

Collagen (what appears as deep purple spots) permeates deep into the skin. This is skin at its most youthful and healthy.

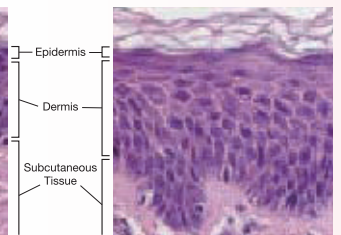


Skin at 70 years of age

A result of aging, the layer of collagen thins, and skin elasticity decreases.



Before applying Nano Collagen



1 month after applying Nano Collagen

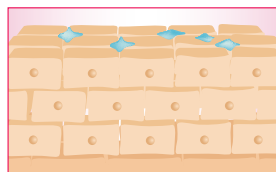
### Effectiveness proven through clinical trial

The purple spots in the upper part of each photo are collagen. Before and after photos of collagen application show a large increase in collagen concentration, resulting in smooth, elastic, moist skin starting from the inner dermis layer.

#### The skin can not easily absorb regular collagen

Collagen is the most important component in giving skin its silky smooth characteristics.

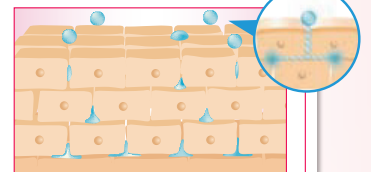
Regular collagen particles are too large to easily be absorbed into the skin.



#### This newly developed collagen contains minuscule collagen particles that have been specially nano-sized.

Nano Collagen is small enough to penetrate directly into the inner dermis skin layer.

Nano Collagen is small enough to penetrate into the skin's dermis layer, restoring skin clarity, elasticity and smoothness.

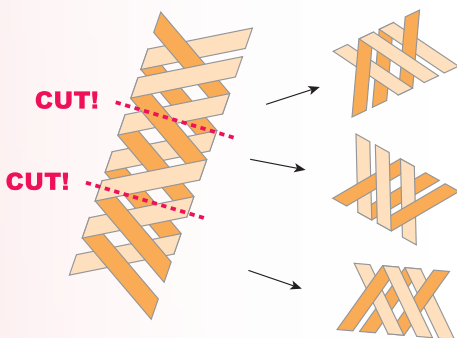


Feature

1

## No affect on the skin's DNA composition, No adverse health effects!

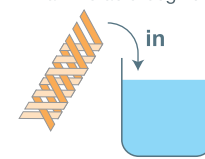
Nano Collagen does not introduce any foreign chemicals to the skin, it is simply the same composition of the body's natural collagen, only nano sized. Because the composition of collagen is the same for all people, it interacts with the body's collagen in the same way as a newly born cell.



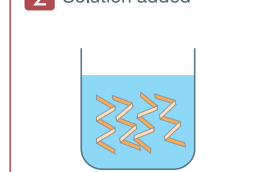
Other company's products

Other products on the market, like "Triple Peptide Molecular Collagen" fail to produce the desired results, as the chemical components are quickly broken down into amino acids, rendering the collagen useless.

1 Chain reaction of amino acid begins



2 Solution added



3 Breaks down into amino acid



Feature

2

## Nano size confirmed by research institutions

### The current state of other collagen products on the market

The 'molecular' collagen contained in other skin care products is still much larger than Nano Collagen. Further, other companies claiming to produce nano-sized collagen have yet to undergo the strict testing and scientific oversight to prove that their products truly function as advertised.

Examining nano collagen at 200,000 times magnification through TEM (transmission electron microscopy).

